

IMPORTANT SAFETY INSTRUCTIONS

When using electrical appliances, especially when children are present, basic safety precautions should always be taken, including the following:

READ ALL INSTRUCTIONS BEFORE USING

DANGER — Any appliance is electrically live even when the switch is off. To reduce the risk of death by electric shock:

1. **Always unplug appliance immediately after using.**

2. Do not place or store appliance where it can fall or be pulled into a tub or sink.
3. Do not place in, or drop into water or other liquids.
4. If an appliance falls into water, unplug it immediately. **Do not reach into the water.**

WARNING — To reduce the risk of burns, electrocution, fire, or injury to persons:

1. **This appliance should never be left unattended when plugged in.**

2. This appliance should not be used by, on, or near children or individuals with certain disabilities. Unsupervised use could result in fire or personal injury.
3. Use this appliance only for its intended use as described in this manual. Do not use attachments not recommended by the manufacturer.

CLEANING AND STORING

1. Turn the "I"/"O" (ON/OFF) switch to the "O" (OFF) position and unplug from the power source.
2. Wait for the steamer to cool completely for at least 30 minutes.
3. Remove the steamer hose.
4. Remove the water container from unit, unscrew valve and empty unused contents. Allow to air dry.
5. Remove excess water from the reservoir by unscrewing the plug on the bottom of the steamer and letting the water drain out.
6. Collapse telescopic hanger rod.
7. Replace water container.
8. Store the unit.



4. **Never operate this appliance if it has a damaged cord or plug, if it is not working properly, or if it has been dropped or damaged, or dropped into water. Do not attempt to repair the appliance. Incorrect reassembly or repair could cause a risk of fire, electric shock, or injury to persons when the appliance is used. Return the appliance to an authorized service center for examination and repair.**

5. Keep the cord away from heated surfaces. Do not allow cord to contact heated surfaces. Do not pull or twist cord. Let appliance cool completely before putting away.
6. This appliance has a polarized plug (one blade is wider than the other). As a safety feature, this plug will fit in a polarized outlet only one way. If the plug does not fit fully in the outlet, reverse the plug. If it still does not fit, contact a qualified electrician. Do not attempt to defeat this safety feature.
7. Never drop or insert any object into any opening or hose.
8. Do not use outdoors or operate where aerosol (spray) products are being used or where oxygen is being administered.
9. Do not use an extension cord to operate appliance.
10. Surfaces of this appliance may be hot when in use. Do not let heated surfaces touch eyes or skin.
11. Do not place the steam nozzle directly on any surface or on the appliance power cord while it is hot or plugged in. Use the stand provided.
12. Unplug this appliance before filling or emptying. Do not overfill.

CAUTION: Hose will be hot when in use. Avoid prolonged contact.

OTHER IMPORTANT NOTES

During operation, the steamer hose may gurgle. This is a normal result of condensation collecting inside the hose. Simply lift the handle upward until the hose is extended to its full height. The gurgling will disappear when the excess moisture inside the hose has had a chance to drain back into the base.



13. While operating steam, this appliance may cause burns if it is used too close to the skin, scalp or eyes, or if it is used incorrectly. To reduce the risk of contact with hot water discharging from steam vents, test appliance before each use by holding it away from body.
14. Do not operate steamer without properly filling the water container.
15. Always keep the hose and nozzle elevated above the water container.
16. Never yank cord to disconnect from outlet. Instead, grasp plug and pull to disconnect.
17. Burns could occur from touching hot metal parts, hot water, or steam. Use care when removing water tank or when you turn a steam appliance upside down – there may be hot water in reservoir.
18. To reduce likelihood of circuit overload, do not operate another high-wattage appliance on the same circuit.
19. If an extension cord is absolutely necessary, a 15 ampere rated cord should be used. Cords rated for less amperage may overheat. Care should be taken to arrange the cord so that it cannot be pulled or tripped over.
20. Always remove the reservoir from the appliance before filling it with water.
21. When changing attachments, please be sure the unit is off and no steam is being released in order to avoid contact with hot water.
22. Use caution when changing attachments, as they may contain hot water from condensation. Ensure the attachments are dry or cooled off, to avoid contact with hot water.

DECALCIFICATION

If the appliance begins to produce steam more slowly than usual or stops producing steam and then starts again, you may need to decalcify your steamer. Decalcification refers to removing the calcium deposits that form over time on the metal parts of the steamer. For best performance from the Conair® Ultimate Fabric Steamer, decalcify the unit from time to time. The frequency depends upon the hardness of your tap water and how often you use the steamer.

To decalcify, use a solution of 1/3 white vinegar and 2/3 water in the water container. Replace the water container in the unit. Plug the unit into electrical outlet. Turn to the "I" position and run until half the amount has steamed (1 liter). Turn the unit to the "O" position, unplug from electrical outlet, and allow to sit for 30 minutes. Remove water container.

Remove excess water from the reservoir by unscrewing the plug at the bottom of the steamer and holding it over the sink, allowing the water to drain from the internal reservoir.

Repeat the above procedure as many times as necessary until a normal steam rate returns, usually 2–3 times. With each repeated cycle, use a fresh solution of vinegar and water. Run one cycle of fresh, cold water through the unit at the completion of decalcification before using the unit again to steam garments.



SAVE THESE INSTRUCTIONS

FOR HOUSEHOLD USE ONLY

UNPACKING INSTRUCTIONS

Place the box on a large, sturdy flat surface. Carefully remove the appliance from the packing material. Keep all plastic bags away from children.

STEAMER ASSEMBLY STEP 1 - Attaching the Telescopic Pole and Rotating Hanger

Insert the bottom of the larger metal telescopic pole into the holder on the unit base and screw the set screw until tight. (Caution: Do not over-tighten.) Then attach pieces as shown in Fig. 1.



STEP 2 - Attaching the Steamer Hose

Be sure the unit is off ("O"). Insert angled end of hose into steamer housing and twist clockwise to securely lock hose onto housing. (Be sure both connections at ends of hose are correct before operating appliance.) (see Fig.2)

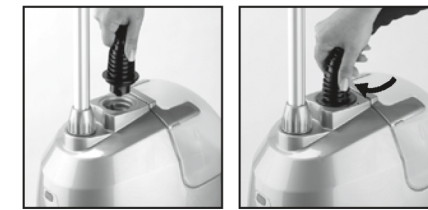


Fig. 2

Extend the telescopic pole and hang the steam nozzle from the rotating hanger. Hose may be stiff upon removal from box. **Hose will relax after initial use. Handle will sit properly on pole support once hose is relaxed. (Fig. 5)**

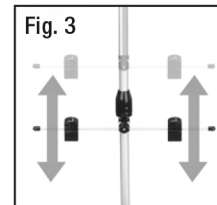


Fig. 3



Fig. 4

USING PANT CLIP SYSTEM

This fabric steamer is equipped with a pant clip system for holding pants taut for faster and more effective steaming. The bottom clips can be adjusted by loosening the knob (on the telescopic pole) and moving the pole up and down, depending upon the length of pants (see Fig. 3). Clip pants as shown in Fig. 4 and steam. **Please note some pants may**

be too long to use the bottom clips. If that is the case, just simply use the top clips and let your pants hang freely.

TROUBLESHOOTING THE STEAMER

- **PROBLEM** - Steamer fails to heat
CAUSE - Steamer not plugged in
SOLUTION - Plug into electrical outlet
- **PROBLEM** - No steam
CAUSE - Water level is low
SOLUTION - Turn "I"/"O" (ON/OFF) switch "O" (OFF) and refill water container
- **PROBLEM** - Water drips from nozzle
CAUSE - Condensation in hose
SOLUTION - Hold the hose vertically and allow water to drain back into unit
- **PROBLEM** - Nozzle gurgles
CAUSE - Condensation in hose
SOLUTION - Hold the hose vertically and allow water to drain back into unit
- **PROBLEM** - Poor steam performance
CAUSE - Sediment in container
SOLUTION - Decalcify reservoir and water container

NOTE: Amounts of chemicals in water will vary in different areas. To ensure continued operation of the steamer, never store without cleaning and removing excess water from the reservoir and water container.

OPERATING INSTRUCTIONS

BEFORE FILLING THE WATER CONTAINER

Turn the water container upside down and inspect to make sure the valve and spring assembly are functioning. Place the container in the reservoir and check that it is seated securely. If the container has been stored with water inside, it may be necessary to remove the water and clean the container. Follow the steps for care and cleaning.

FILLING THE WATER CONTAINER (PRIOR TO PLUGGING IN THE APPLIANCE)

Remove the water container with the handle and turn upside down. Unscrew the valve in the center of the base. Fill container by holding container under a source of running cold water until the container is filled to the desired level. Do not overfill. Screw the valve cap onto the water container and return the container to the upright position. Place the water container onto the base and make certain it is seated properly in the cavity. **DO NOT FILL THE CONTAINER WITH HOT WATER.**

LIMITED ONE YEAR WARRANTY

Conair will repair or replace, at our option, your appliance free of charge for 12 months from the date of purchase if the appliance is defective in workmanship or materials.

To obtain service under this warranty, return the defective product to the service centre below together with your sales slip and \$7.50 for postage and handling.

ANY IMPLIED WARRANTIES, OBLIGATIONS, OR LIABILITIES, INCLUDING BUT NOT LIMITED TO THE IMPLIED WARRANTY OF MERCHANTABILITY AND FITNESS FOR A PARTICULAR PURPOSE, SHALL BE LIMITED IN DURATION TO THE 12 MONTH DURATION OF THIS WARRANTY.

IN NO EVENT SHALL CONAIR BE LIABLE FOR ANY SPECIAL, INCIDENTAL, OR CONSEQUENTIAL DAMAGES FOR BREACH OF THIS OR ANY OTHER WARRANTY, EXPRESS OR IMPLIED, WHATSOEVER.

This warranty gives you specific legal rights, and you may also have other rights which vary from province to province.

OPERATING THE STEAMER

1. Make sure the "I"/"O" (ON/OFF) switch is in the "O" (OFF) position.
2. Make sure all hose connections are secure and tight.
3. Make sure the telescopic pole is fully extended and the hose is not twisted or kinked.
4. Plug the steamer cord into a normal electrical outlet.
5. Turn the "I"/"O" (ON/OFF) switch to the "I" (ON) position.
6. The switch will light to indicate when power is "I" (ON)
7. Steam will be produced from the nozzle in about one minute.
8. To turn the steamer off, turn the "I"/"O" (ON/OFF) switch to the "O" (OFF) position.

GETTING TO KNOW YOUR STEAMER

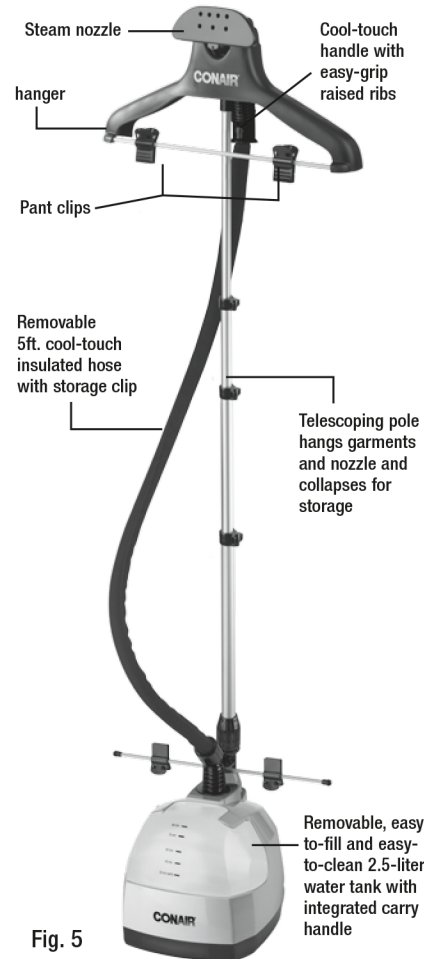


Fig. 5

ultimate FABRIC STEAMER

REMOVES WRINKLES & ODORS FROM GARMENTS & KILLS DUST MITES!

Instructions for Use

For your safety and continued enjoyment of this product, always read the instruction book carefully before using.



Have a Question?

Please do not return this product to the retailer. Call Us First!

Our customer service and product experts are ready to answer ALL your questions. Please call our TOLL-FREE customer service number at: 1-855-926-6247 or visit us online at www.conaircanada.ca

CONAIR
Model GS28RBBC

SERVICE CENTRE:

Conair Consumer Products ULC
100 Conair Parkway,
Woodbridge, Ontario, L4H 0L2
1-855-926-6247
©2016 Conair Consumer Products ULC
www.conaircanada.ca
Consumer Call Centre E-mail :
Consumer_Canada@Conair.com